

**NORTH CHARLESTON
COLISEUM**



**NORTH CHARLESTON
PERFORMING ARTS CENTER**

CHARLESTON AREA CONVENTION CENTER

R. Keith Summey
Mayor

Frank Lapsley
General Manager

NORTH CHARLESTON COLISEUM

FACILITY INFORMATION

REVISED JULY 2017



TABLE OF CONTENTS

1.0 FACILITY SPECIFICATIONS	4
1.1 CAPACITY	4
1.2 ELECTRICAL.....	4
1.3 FLOOR SIZE & ACCESS	4
1.4 FORKLIFTS	4
1.5 HEADSETS	4
1.6 HOUSE LIGHTING	4
1.7 LOADING AREA	4
1.8 MIX LOCATION	5
1.9 PARKING	5
1.10 RIGGING	5
1.11 SCOREBOARD	5
1.12 SOUND SYSTEM	5
1.13 SPOTLIGHTS.....	5
1.14 ELEVATIONS.....	5
1.15 STAGING, MIX & BARRICADE	5
1.16 SUPPORT AREAS	5
1.17 INTERNET/TELEPHONES	5
1.18 TRUCK STAGING	6
1.19 WEIGHT RESTRICTIONS	6
2.0 GUEST SERVICES	6
2.1 CONCESSIONS	6
2.2 CONCOURSE LEVEL OFFICES.....	6
2.3 NOVELTIES.....	6
2.4 PARKING	6
2.5 RESTROOMS	6
2.6 ATM.....	6
3.0 GENERAL INFORMATION.....	6
3.1 COLISEUM HOURS.....	6
3.2 ELEVATORS	6
3.3 INDOOR PYROTECHNICS	7
3.4 SECURITY.....	7
3.5 TENANTS.....	7
4.0 FACILITY CHARTS & PLANS.....	8
4.1 SEATING CONFIGURATIONS	8
4.2 SEATING CHARTS	9
4.3 RIGGING LAYOUTS.....	10
4.4 BACKSTAGE	13
4.5 DRESSING ROOM LAYOUT	14
4.6 COLISEUM CLUB ROOMS	15
4.7 MONTAGUE TERRACE	16
4.8 COLISEUM TERRACE.....	17

1.0 FACILITY SPECIFICATIONS

1.1 CAPACITY

The arena is an oval with four primary seating sections: upper fixed, lower fixed, lower risers and floor.

Concert 13,295

Basketball 11,475

Hockey 10,537

See **Seating Configurations** for additional information.

1.2 ELECTRICAL

Show Power West

Located upstage right,
50' from upstage center

(1) 800 Amp, 3 phase

(2) 600 Amp, 3 phase

(1) 200 Amp, 3 phase

Located upstage left,
50' from upstage center

(1) 200 Amp, 3 phase

(1) 400 Amp, 3 phase

Show Power East

Located at rear of house left,
230' from upstage center

(1) 400 Amp, 3 phase

Show Power Catwalk

Located above stage,
70' above upstage center

(1) 800 Amp, 3 phase

Bus Power

(2) 250 Amp, 3 phase (North / South)

(1) 200 Amp, 3 phase (West at island)

(1) 400 Amp, 3 phase (West at island)

All service voltage is 120/208

Catering Electrical:

Outside East End: 3 or 4 wire 50 amp Range Plugs

Outside: 1-200 amp, 3 phase

Inside: 2 – 50 amp Range Plugs

100 amp 3 phase

Cold water hook up outside

1.3 FLOOR SIZE & ACCESS

Wall to wall 112' X 224'

Hockey 85' X 200'

Risers extended 74' X 184'

From Backstage - through interior roll-up door.
From Production Office and Dressing/Team Room
Area - through two tunnels on the house left side of
facility equidistant from center of facility.

150' from Dressing / Team Rooms to Backstage

45' from Dressing / Team Rooms to arena floor

1.4 FORKLIFTS

(2) Yale CNG forklifts with 5,000 lbs basic load
capacity and 14' lift. One set of five-foot fork
extensions.

(1) Yale CNG forklift with 7,000 lbs basic load
capacity.

1.5 HEADSETS

Clear COM system with hard-wired locations
throughout the arena.

1.6 HOUSE LIGHTING

Metal halide combined with a dimmable quartz
system.

1.7 LOADING AREA

Located at the West end of building (service area)
with 2 exterior doors. One dock with a leveler plate
and one 26' ramp into the building (1" in 1' rise).

Exterior roll-up door measures 12'8"h X 20'w. Interior
roll-up door measures 12'2"h X 16'w. Distance from
exterior door to interior door is 56'. Distance from
exterior door to rear of stage is 100'.

The interior staging area (backstage) is approximately
80' X 48' with an overall height restriction of 12'.

1.8 MIX LOCATION

The house mix location is house right at concourse level in seating section 114, 140' from stage. The preferred floor location is 112' from stage.

1.9 PARKING

Service area has space and power for approximately eight buses and/or trucks. Service area is secured and lighted. Adjacent parking lot provides ample additional parking.

1.10 RIGGING

End Stage

Catwalk at 69' above arena floor

Open steel at 97' above arena floor

Grid at 83' above arena floor

Grid measurements: 46' x 68' (Drawings: page 10-12)

Grid capacity: 80,000 lbs

Center Stage

Grid at 69' above arena floor

Grid measurements: 39'6" outside, 27'6" inside

Grid capacity: 90,000 lbs

1.11 SCOREBOARD

Four-sided center hung board with 480i HD full color LED video message center; Hockey trim height 30 ft.

1.12 SOUND SYSTEM

Main exploded center cluster of 12 EV EVH-S 15 speakers covering the lower arena and floor. Subwoofer system includes eight XLCi215 hanging in a line from the roof in the center of the room. 20 additional two-way JBL satellite speaker clusters cover the upper seating areas. Each of these speakers can be remotely turned 'on' and 'off' to accommodate any needed configuration.

1.13 SPOTLIGHTS

(12) 2k Lycian 1290 XLT's

1.14 ELEVATIONS

18' – Concourse

53' – Last row

69' – Catwalk

83' – End stage rigging grid

97' – Open steel

1.15 STAGING, MIX & BARRICADE

All material is Stage Right

Stage

60' x 48' w/ 24' x 12' sound wings (4' x 8' sections)

Adjustable from 4' to 6' high

Three lighted stair units

ADA ramp

Weight limit is 125 lbs per square foot live load

Mix Platform

4' x 8' sections up to 28' x 16', adjustable from 16" to 24" high

4' x 8' sections up to 24' x 16', adjustable from 24" to 32" high

Barricade

41 sections of bike barricade, 8'4" long x 3'7" high

17 sections of rolling bike barricade, 8'4" long x 3'7" high

96' of freestanding solid barricade (4' x 8' sections)

72' of Blow-Through barricade

1.16 SUPPORT AREAS

Dressing Room Area

Production office (1) 12'w x 14'd x 8'h

Star Dressing rooms (2) 16'w x 12'd x 8'h

Green room 25'w x 14'd x 8'h

Media Work room 28'w x 15'd x 8'h

Team Locker rooms (4) 19'w x 17'd x 8'h

Small Dressing rooms (3) 12'w x 5'd x 8'h

C113 Room (1) 12'w x 14'd x 8'h

1.17 INTERNET/TELEPHONES

Phone lines and internet (hard-wired and wireless) are available backstage, arena floor, concourse, Club rooms, and both Terraces.

1.18 TRUCK STAGING

Truck staging area is approximately 180' x 90'

1.19 WEIGHT RESTRICTIONS

Main floor restrictions to 500 PSF

2.0 GUEST SERVICES

2.1 CONCESSIONS

10 permanent food and beverage stands
Multiple portable locations

2.2 CONCOURSE LEVEL OFFICES

Guest Services Information Desk

Located at Section 130. Staffed during events offering Lost & Found, Lost Children services and Coliseum information.

First Aid

Located at Section 108. Staffed with first aid personnel and supplies during events

**ALL FACILITIES ARE ACCESSIBLE TO THE
PHYSICALLY CHALLENGED**

2.3 NOVELTIES

Novelty locations are available as needed. The preferred locations are North Concourse (Sections 110/112) and South Concourse (Sections 130/132)

2.4 PARKING

2,325 on-site parking spaces
\$10.00 per car parking fee

2.5 RESTROOMS

Concourse: 6 Women's / 4 Men's
Club Rooms: 1 Women's / 1 Men's (Family Restroom)
Each Terrace: 1 Women's / 1 Men's

2.6 ATM

(1) ATM located at Section 128

3.0 GENERAL INFORMATION

3.1 COLISEUM HOURS

The North Charleston Coliseum and its facilities will be scheduled for your use as specified in your Facilities License Agreement. Changes may incur additional charges.

Ticketed Events (i.e. Concerts, Hockey, Spectator Events)

The doors of the North Charleston Coliseum will normally open for the general public one hour prior to the event start time designated on the tickets.

Trade/Consumer Shows

The doors of the North Charleston Coliseum will open for the general public at the time designated as the show hours.

3.2 ELEVATORS

Freight Elevator

The freight elevator is located at Section 106
Capacity is 10,000 pounds
Platform size is 7' 8" wide x 14' deep
Door opening is 7' 8" wide x 8' high
Use of this elevator is for Authorized Personnel Only

Public Elevators

Two public elevators; the use of these elevators is restricted to guests with disabilities and others who require assistance.

South side Disabled Entrance/Section 128
North side lobby/Coliseum Terrace

3.3 INDOOR PYROTECHNICS

The procedure to obtain approval to use pyrotechnics at the North Charleston Coliseum is as follows:

- 1) Contact the North Charleston Coliseum **(843) 529-5050** at least 45 working days in advance of the date that you wish to use pyrotechnics. An application and memo explaining the full procedure will be sent to you.
- 2) Meet all the requirements of **NFPA 1126, 1992 EDITION**.
- 3) Use only properly licensed pyrotechnicians and/or companies.
- 4) Obtain approval from the State of South Carolina as well as North Charleston Fire Department approval. You must file a plan of what will be used and where and provide a local demonstration of all effects that will be used. Additional fire watch personnel, paid for by the event, will be assigned by NCFD.

3.4 SECURITY

Due to the diverse nature of the events and the size of the North Charleston Coliseum, we maintain our own 24-hour Command Center Staff responsible for basic building security and the safeguard of North Charleston Coliseum property. The Director of Event Services will be your contact for any additional security needs you may have.

24-hour recorded security cameras are posted in various areas.

The North Charleston Coliseum is not responsible for any lost or stolen articles.

No concealed weapons, of any kind, are permitted in any of the Buildings.

3.5 TENANTS

The North Charleston Coliseum is home to the South Carolina Stingrays of the East Coast Hockey League. Additional information regarding the Stingrays can be obtained by contacting them at:

South Carolina Stingrays
3300 West Montague Avenue
Suite B-302
North Charleston, SC 29418

(843) 744-2248
(843) 744-2898 fax
www.stingrayshockey.com

4.0 FACILITY CHARTS & PLANS

4.1 SEATING CONFIGURATIONS

CONCERT:

End Stage - 360 degrees

Upper Fixed	7,175
Lower Fixed	2,672
Risers	930
Floor	1,834
Disabled	<u>34</u>
Total	12,645

- 270 degrees

Upper Fixed	5,623
Lower Fixed	2,266
Risers	930
Floor	1,834
Disabled	<u>34</u>
Total	10,687

- 180 degrees

Upper Fixed	4,235
Lower Fixed	1,772
Risers	930
Floor	1,834
Disabled	<u>34</u>
Total	8,805

Center Stage

Upper Fixed	7,175
Lower Fixed	2,620
Risers	1,646
Floor	1,820
Disabled	<u>34</u>
Total	13,295

Half-House: "End Stage"

Upper Fixed	2,188
Lower Fixed	1,772
Risers	596
Floor	1,380
Disabled	<u>34</u>
Total	5,970

HOCKEY:

Upper Fixed	7,105
Lower Fixed	2,700
Risers	694
Disabled	<u>38</u>
Total	10,537

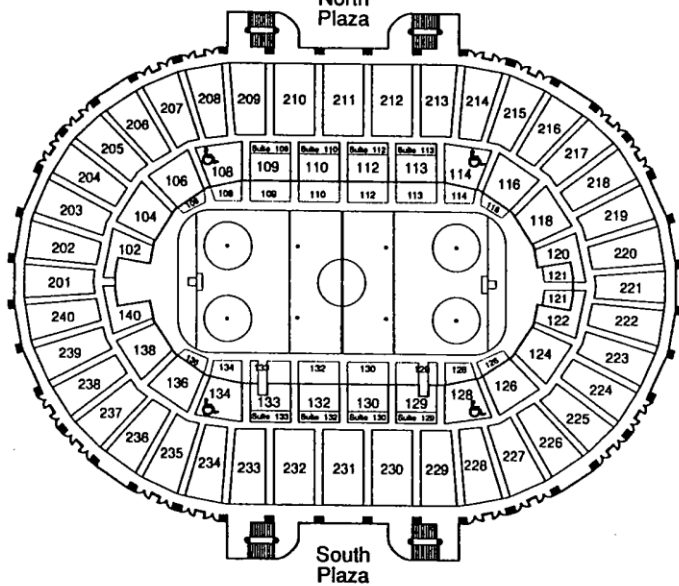
BASKETBALL:

Upper Fixed	7,175
Lower Fixed	2,620
Risers	1,646
Disabled	<u>34</u>
Total	11,475

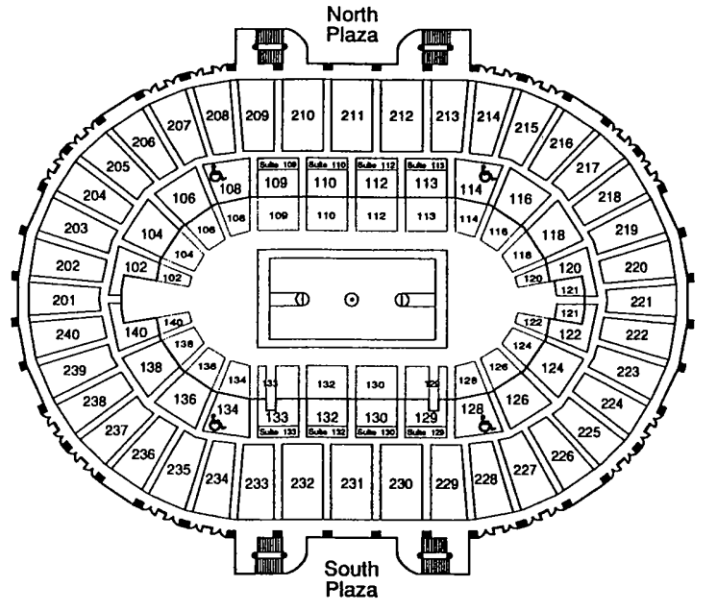
4.2 SEATING CHARTS

SEATING CONFIGURATIONS

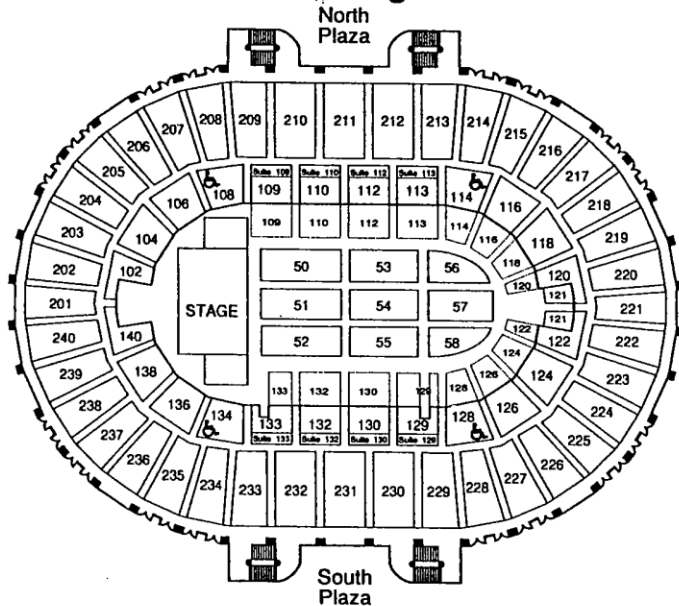
Hockey



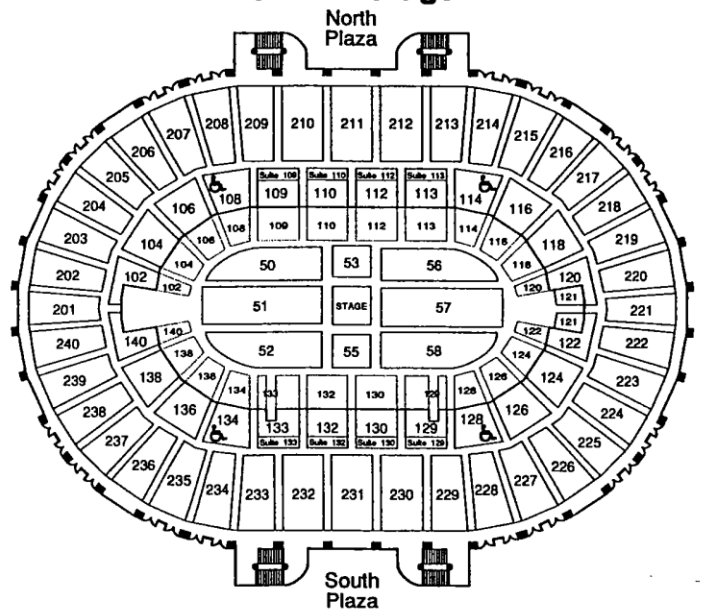
Basketball



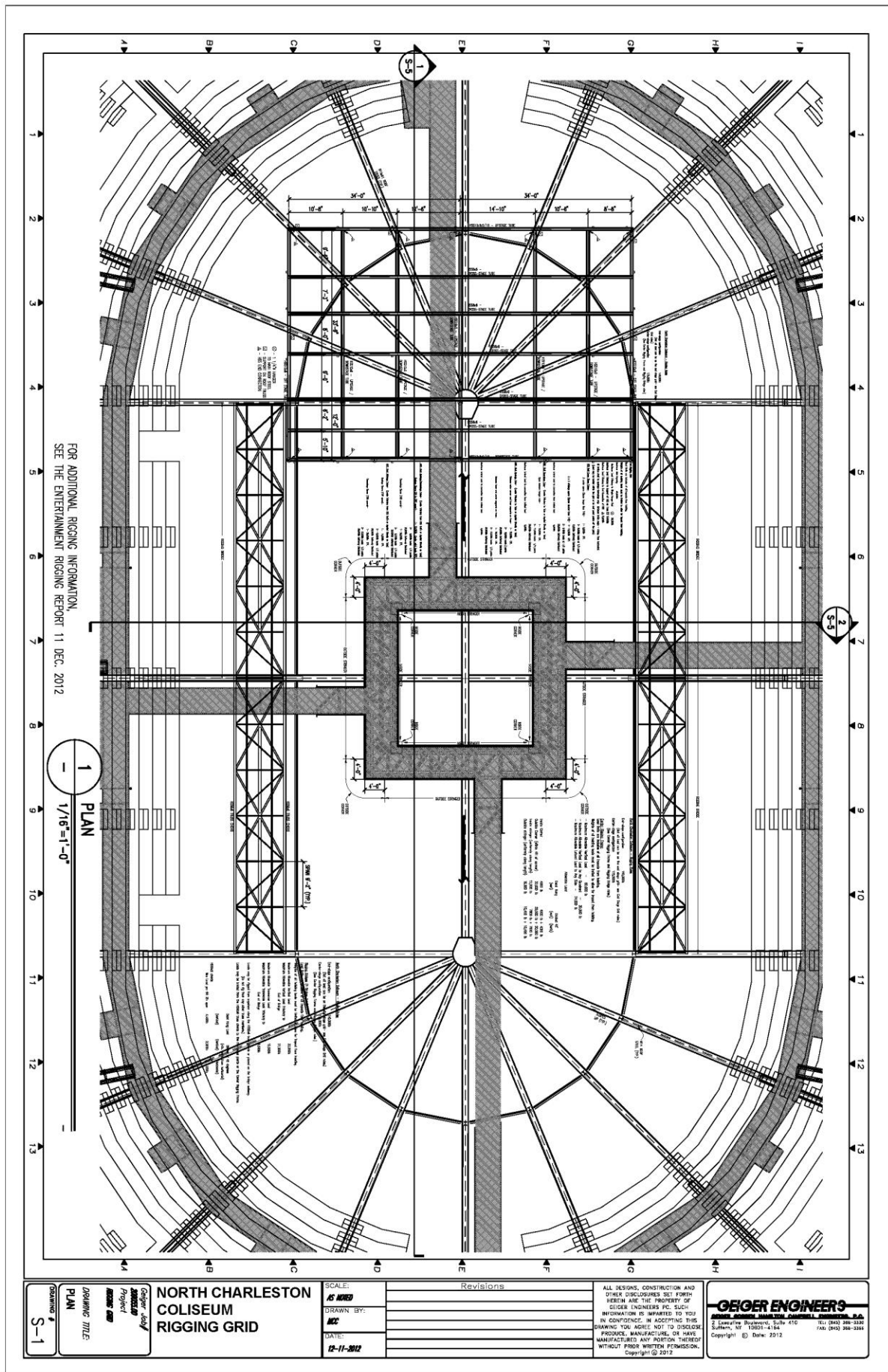
End Stage

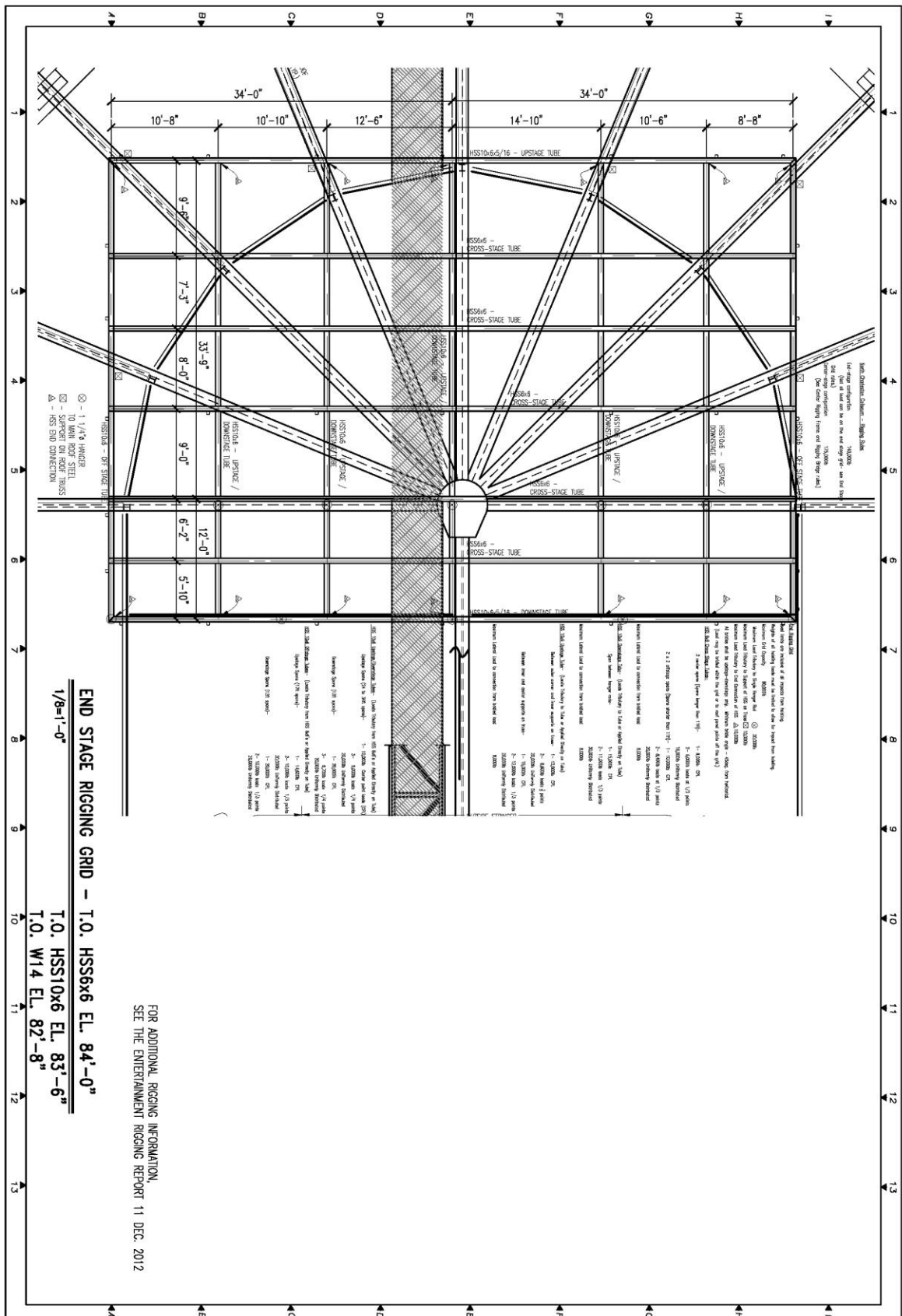


Center Stage



4.3 RIGGING LAYOUTS



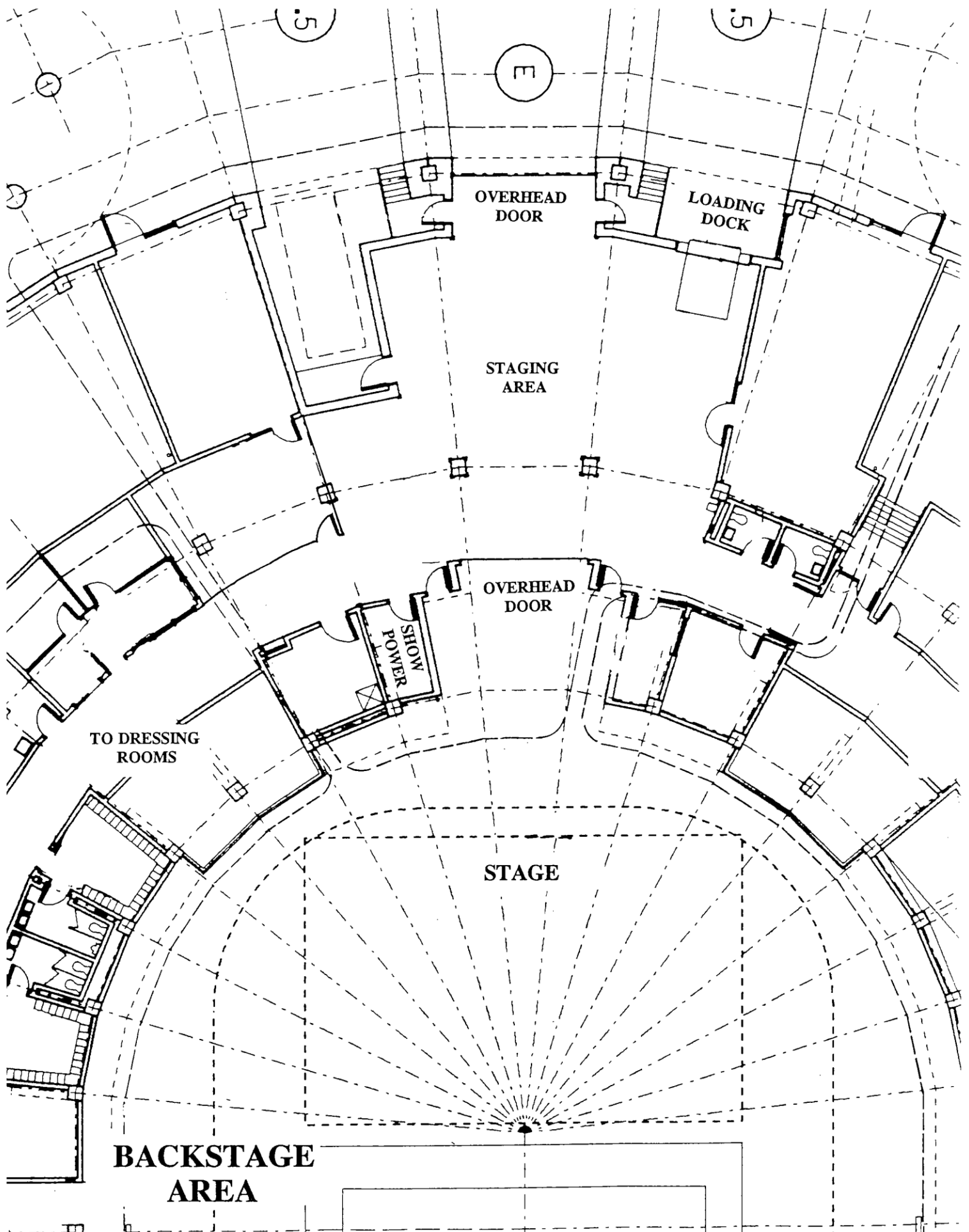


END STAGE RIGGING GRID - T.O. HSS6x6 EL. 84'-0"
 1/8"-1'-0"
 T.O. HSS10x6 EL. 83'-6"
 T.O. W14 EL. 82'-8"

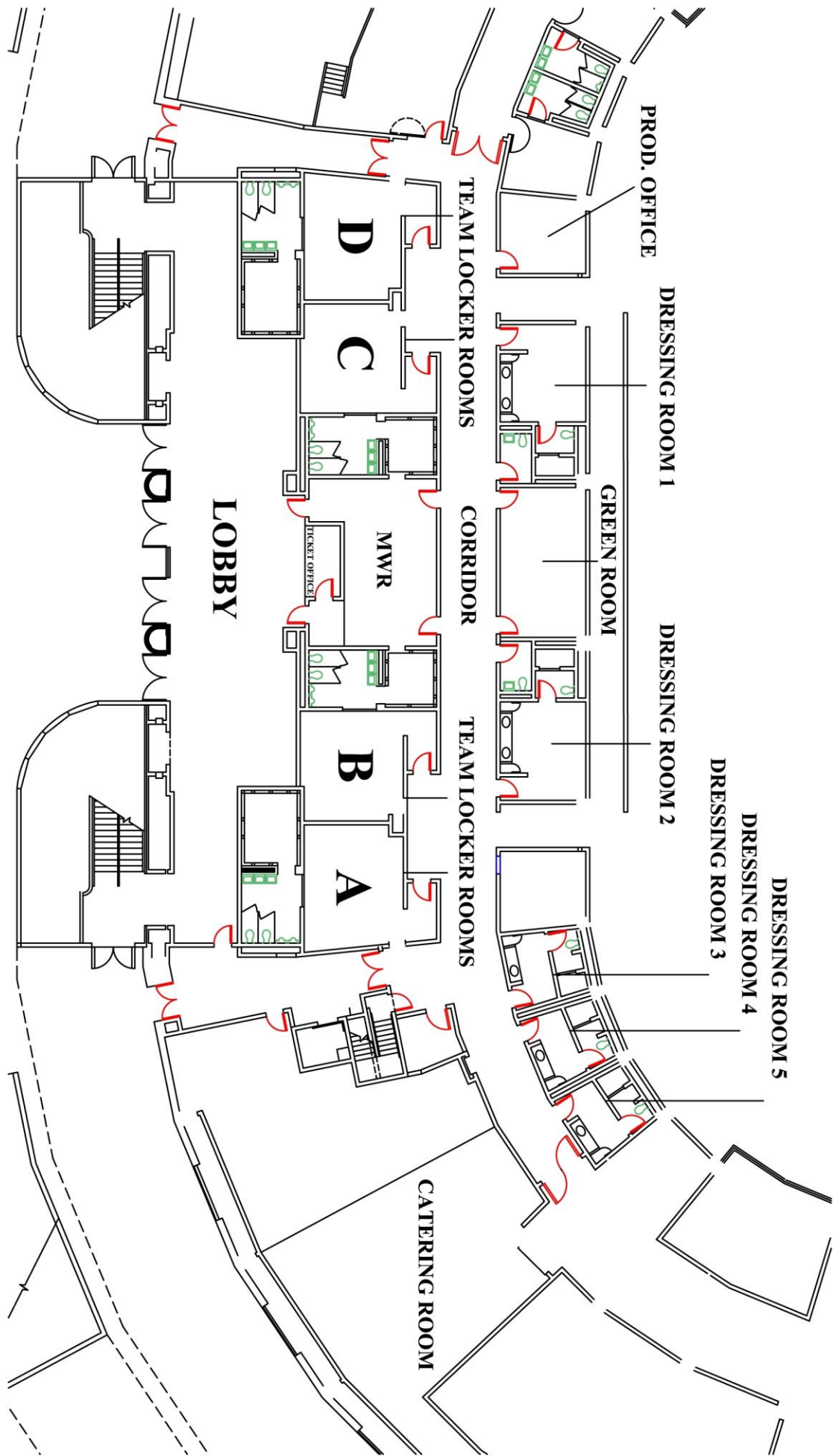
FOR ADDITIONAL RIGGING INFORMATION,
 SEE THE ENTERTAINMENT RIGGING REPORT 11 DEC. 2012

Project NORTH CHARLESTON COLISEUM RIGGING GRID	SCALE: AS SHOWN	Revisions 1. 12-11-2012	ALL DESIGN, CONSTRUCTION AND OTHER DISCLOSURES SET FORTH HEREIN ARE THE PROPERTY OF OGEER ENGINEERS, P.C. SUCH INFORMATION IS IMPARTED TO YOU IN CONFIDENCE. IN ACCEPTING THIS DRAWING YOU AGREE NOT TO DISCLOSE, REPRODUCE, MANUFACTURE, OR HAVE MANUFACTURED ANY PORTION THEREOF WITHOUT PRIOR WRITTEN PERMISSION. Copyright © 2012
	DRAWN BY: MC		
	DATE: 12-11-2012		
	PROJECT TITLE: END STAGE RIGGING GRID		
DRAWING NO. S-2	OGEER ENGINEERS 1000 SOUTH MAIN STREET, SUITE 410 SUTTER, NY 10801-1154 TEL: (516) 360-3800 FAX: (516) 360-3885 Copyright © Date: 2012		

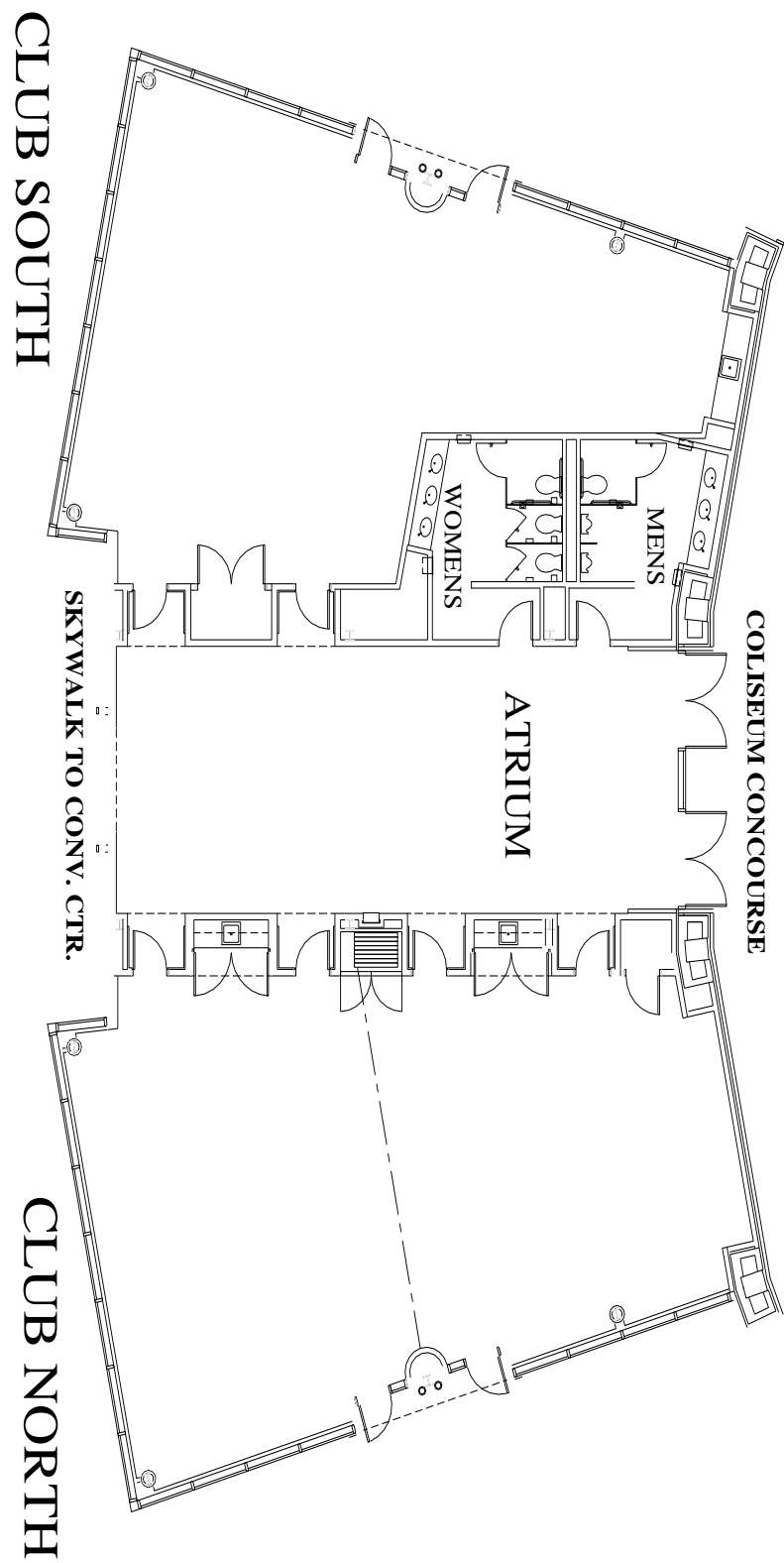
4.4 BACKSTAGE



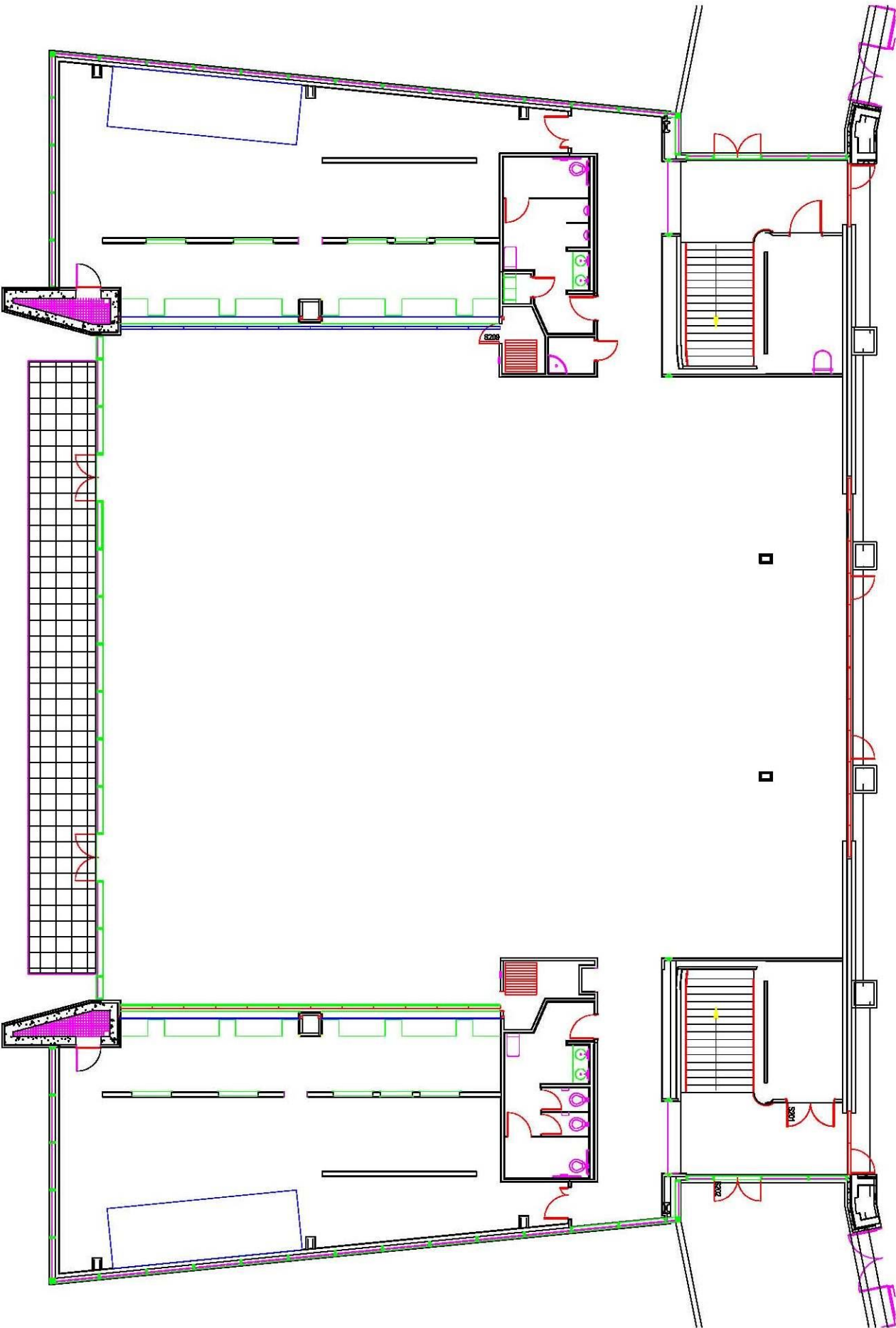
4.5 DRESSING ROOM LAYOUT



4.6 COLISEUM CLUB ROOMS



4.7 MONTAGUE TERRACE



4.8 COLISEUM TERRACE

